

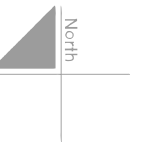
Sutherland Shire Environmental Policy




under Section 72 of the
Environmental Planning & Assessment Act 1979

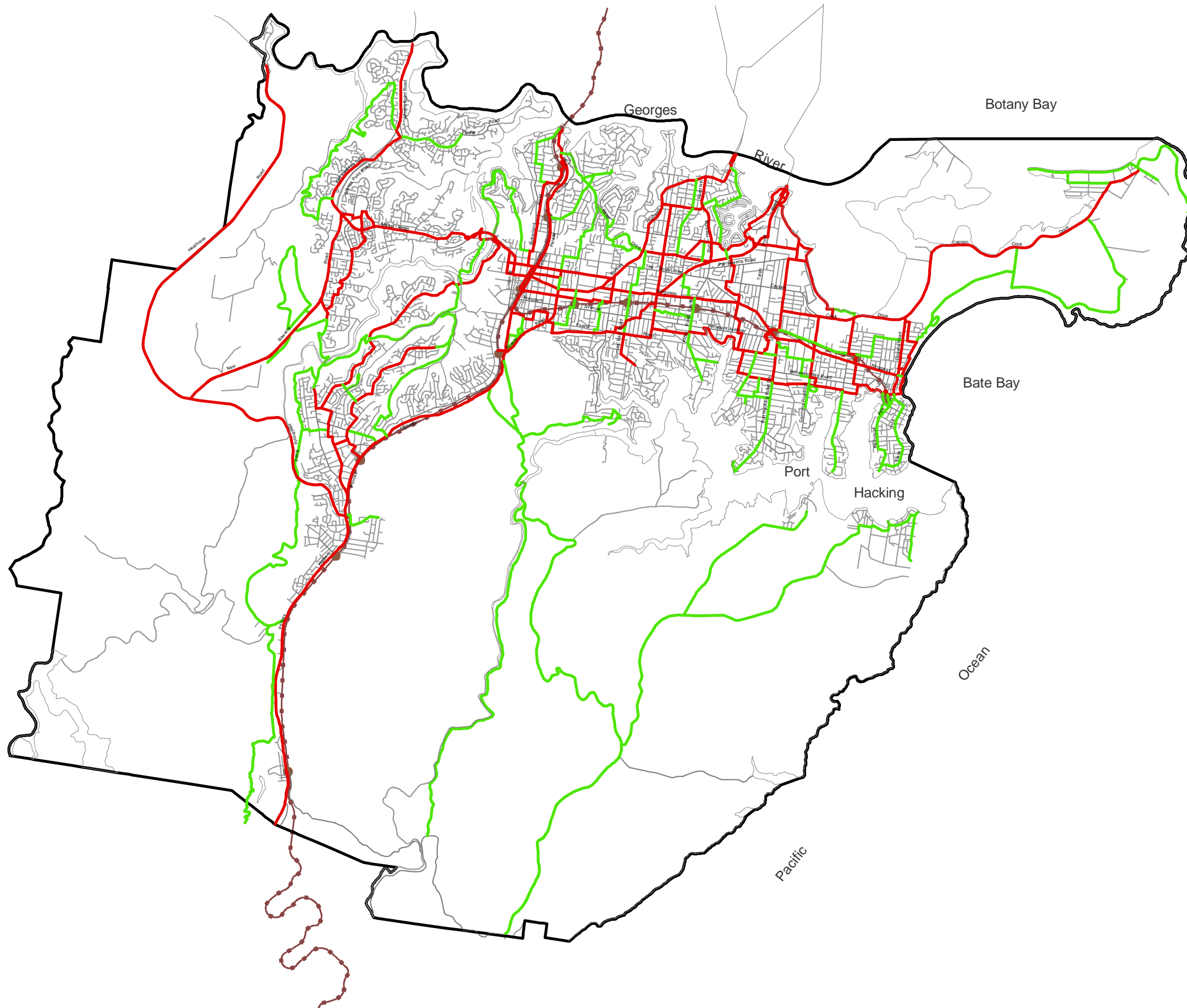
Sutherland Shire Bicycle Network Map

- Reference to Chapter 5.4 of the
Sutherland Shire Environmental Policy

Ratio 1 : 95000



-  Proposed Principal Bicycle Network
-  Proposed Local / Recreation Bicycle Network
-  Existing Railway Corridor - All Railway Corridors
Are Potential Off-Road Regional Routes



Relationship with other Plans.
These maps are to be read in conjunction with
Draft Sutherland Shire Local Environmental Plan 2004.

Sutherland Shire Council
Environmental Planning Unit

Council File Number: 03/00534

DIPNR File Number:

This map is part of the set of maps included with the draft plan.
It was printed on Nov 27, 2003